



Parts List

- 1) Air Oil Separator
- 1) Billet Clamp
- 1) Billet Clamp Saddle
- 1) Stainless Mounting Bracket
- 2) Lengths of 3/8 Hose
- 2) 90 Degree Barbed Fitting
- 4) 1/4-20x5/8 SHCS
- 1) M10x20 HHCS

For Technical Assistance, call Moroso's Tech Line
(203)-458-0542, 8:30am-5:00pm Eastern Time
MOROSO PERFORMANCE PRODUCTS, INC.

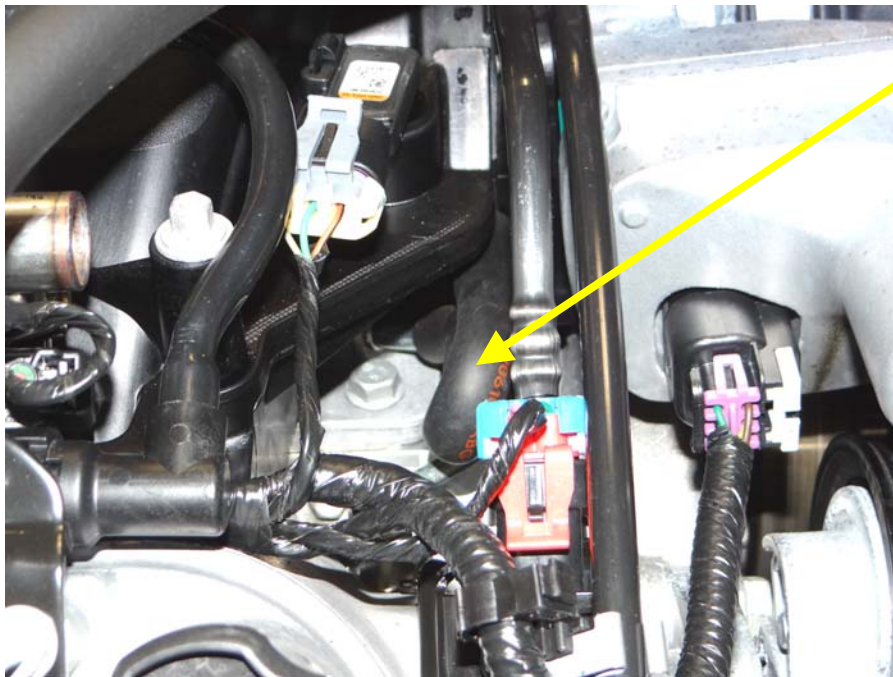
80 CARTER DRIVE
GUILFORD, CT 06437
www.moroso.com

REVA
91015

85678_85679INST



Step 1: Remove passengers side engine cover.



Step 2: Locate PCV line.

For Technical Assistance, call Moroso's Tech Line
(203)-458-0542, 8:30am-5:00pm Eastern Time
MOROSO PERFORMANCE PRODUCTS, INC.

80 CARTER DRIVE
GUILFORD, CT 06437
www.moroso.com

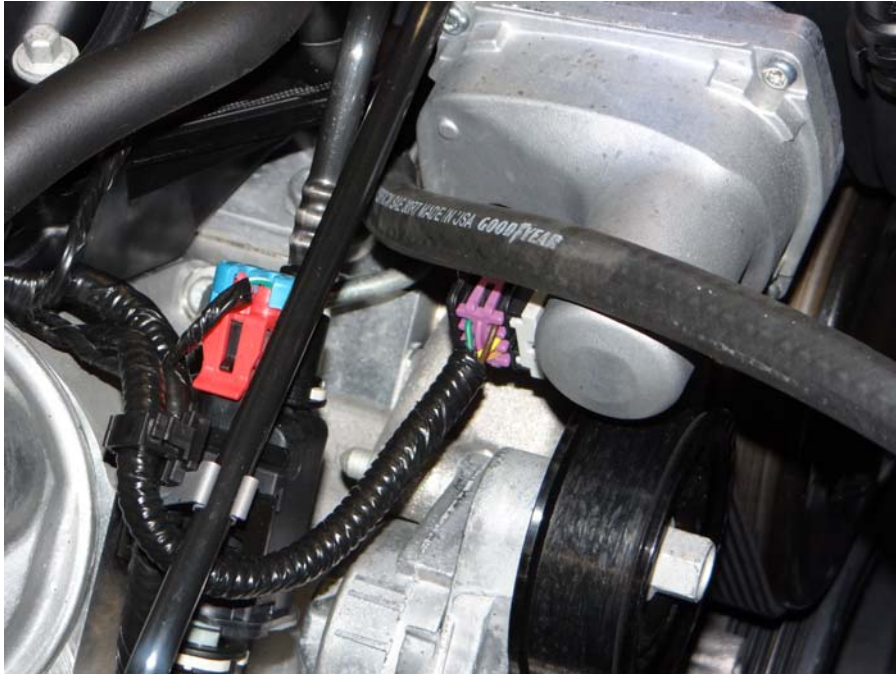


Step 3: Remove PCV line from vehicle.



For Technical Assistance, call Moroso's Tech Line
(203)-458-0542, 8:30am-5:00pm Eastern Time
MOROSO PERFORMANCE PRODUCTS, INC.

80 CARTER DRIVE
GUILFORD, CT 06437
www.moroso.com



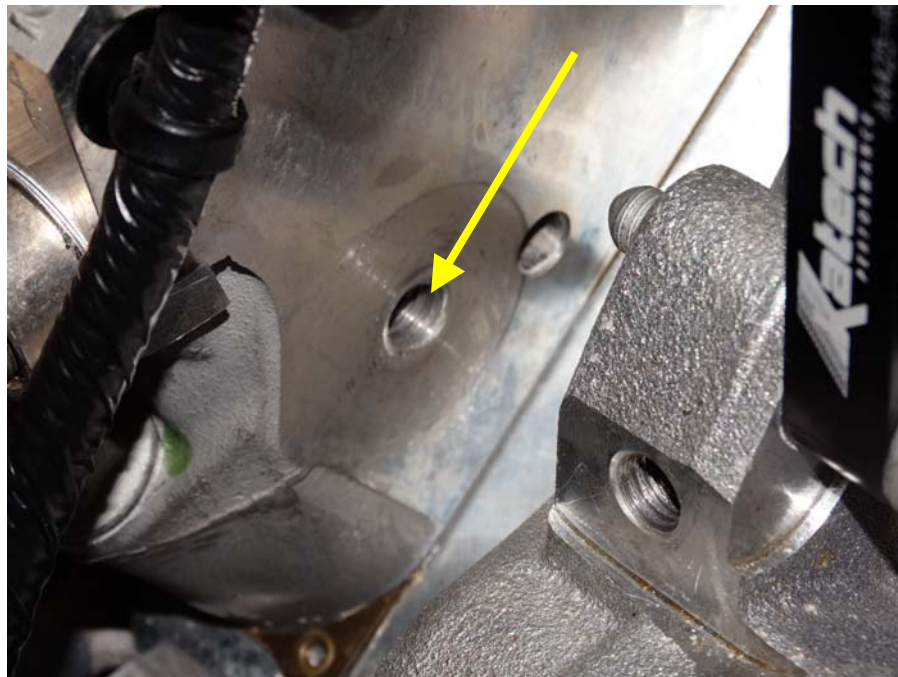
Step 4: Insert length of hose provided in kit to lifter valley nipple.



For Technical Assistance, call Moroso's Tech Line
(203)-458-0542, 8:30am-5:00pm Eastern Time
MOROSO PERFORMANCE PRODUCTS, INC.
80 CARTER DRIVE
GUILFORD, CT 06437
www.moroso.com



Step 5: Insert 2nd length of hose provided in kit to intake nipple.



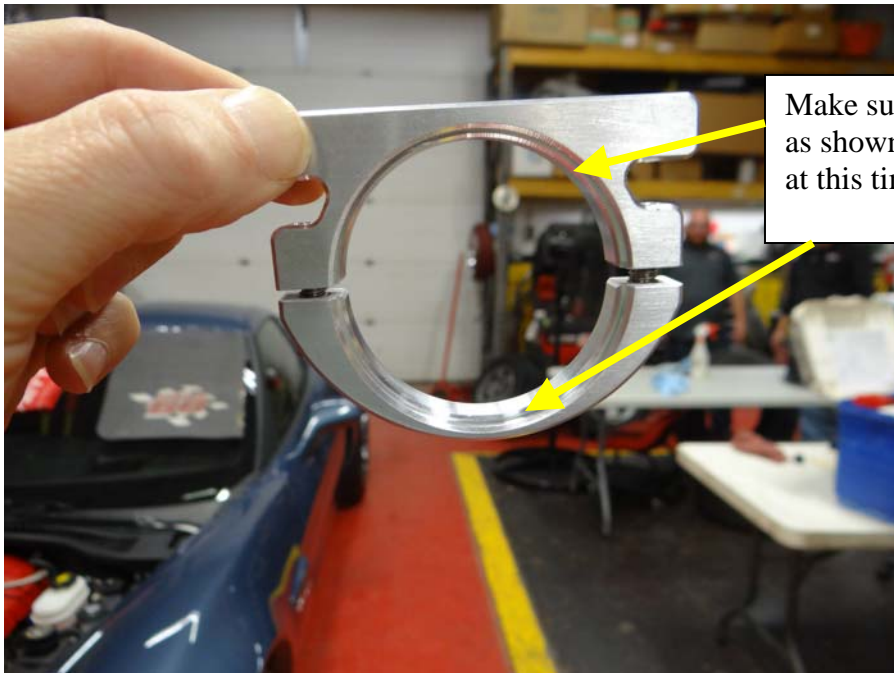
Step 6: Locate threaded hole shown on front of passengers cylinder head.

For Technical Assistance, call Moroso's Tech Line
(203)-458-0542, 8:30am-5:00pm Eastern Time
MOROSO PERFORMANCE PRODUCTS, INC.

80 CARTER DRIVE
GUILFORD, CT 06437
www.moroso.com



Step 7: Install stainless mounting bracket as shown using M10x20 HHCS.



Step 8: Assemble billet clamp to billet saddle using (2) 1/4-20 x 5/8 SHCS.

For Technical Assistance, call Moroso's Tech Line
(203)-458-0542, 8:30am-5:00pm Eastern Time
MOROSO PERFORMANCE PRODUCTS, INC.

80 CARTER DRIVE
GUILFORD, CT 06437
www.moroso.com



Step 9: Assemble Air Oil Separator as shown using Teflon tape on brass fittings.



Step 10: Assemble billet clamp to stainless mounting bracket using (2) ¼-20x5/8 SHCS, be sure that reliefs in billet clamp are facing down. Insert Air Oil Separator into billet clamp.

For Technical Assistance, call Moroso's Tech Line
(203)-458-0542, 8:30am-5:00pm Eastern Time
MOROSO PERFORMANCE PRODUCTS, INC.
80 CARTER DRIVE
GUILFORD, CT 06437
www.moroso.com



Step 11: Set height to 1-1 1/8 and tighten bile clamp.



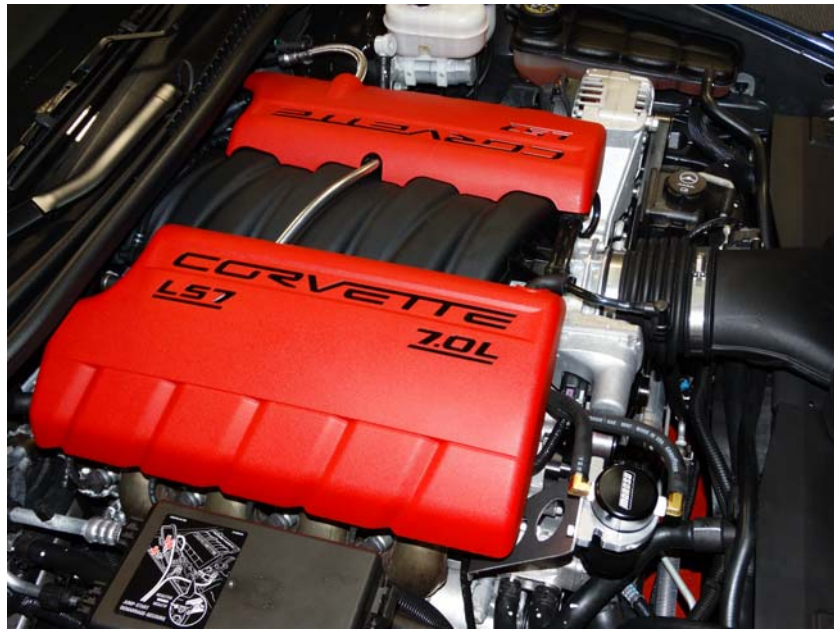
Step 12: Trim hose as needed and assemble to Air Oil Separator.

For Technical Assistance, call Moroso's Tech Line
(203)-458-0542, 8:30am-5:00pm Eastern Time
MOROSO PERFORMANCE PRODUCTS, INC.

80 CARTER DRIVE
GUILFORD, CT 06437
www.moroso.com



Step 13: Trim hose as needed and assemble to Air Oil Separator.



Step 14: Re-install engine cover
Installation complete

For Technical Assistance, call Moroso's Tech Line
(203)-458-0542, 8:30am-5:00pm Eastern Time
MOROSO PERFORMANCE PRODUCTS, INC.
80 CARTER DRIVE
GUILFORD, CT 06437
www.moroso.com



To empty Air Oil Separator Remove bottom cup and re-install after oil has been removed.

Draining of Air Oil Separator is needed; this will depend on driving conditions (i.e.) normal day to day driving check every 1,000 miles until a baseline is established. A good baseline is to drain the Air Oil Separator when it is about HALF full. This will vary with temperatures (cold winters vs. hot summers). For track usage Air Oil Separator will need to be drained after every outing.

For Technical Assistance, call Moroso's Tech Line
(203)-458-0542, 8:30am-5:00pm Eastern Time
MOROSO PERFORMANCE PRODUCTS, INC.
80 CARTER DRIVE
GUILFORD, CT 06437
www.moroso.com