

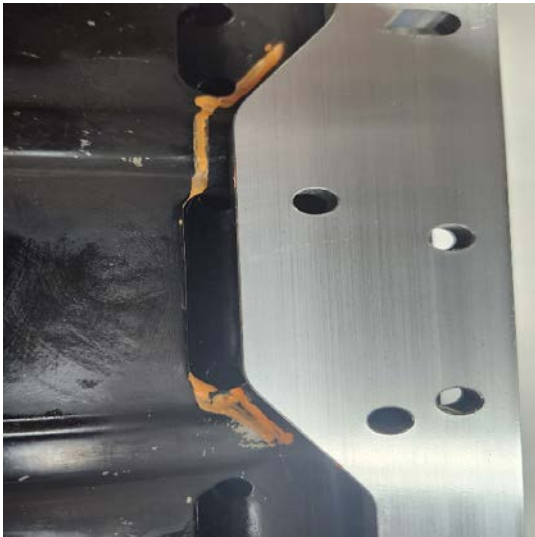


INSTALLATION INSTRUCTIONS

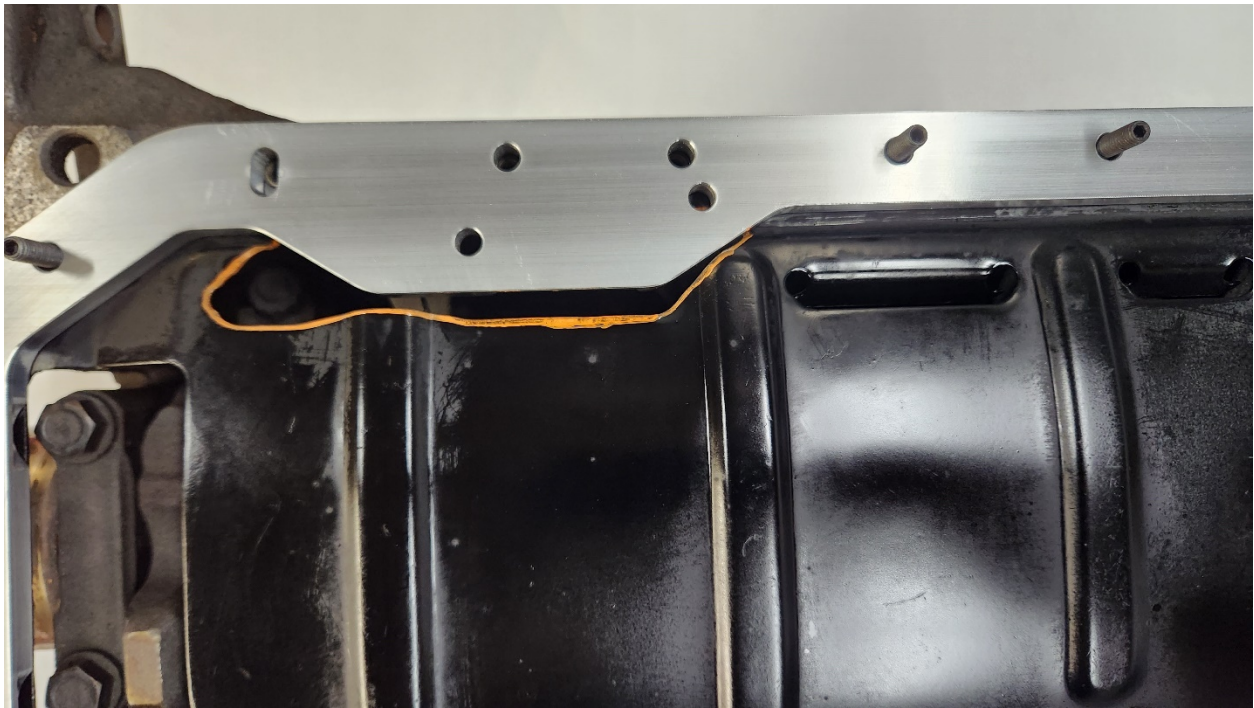
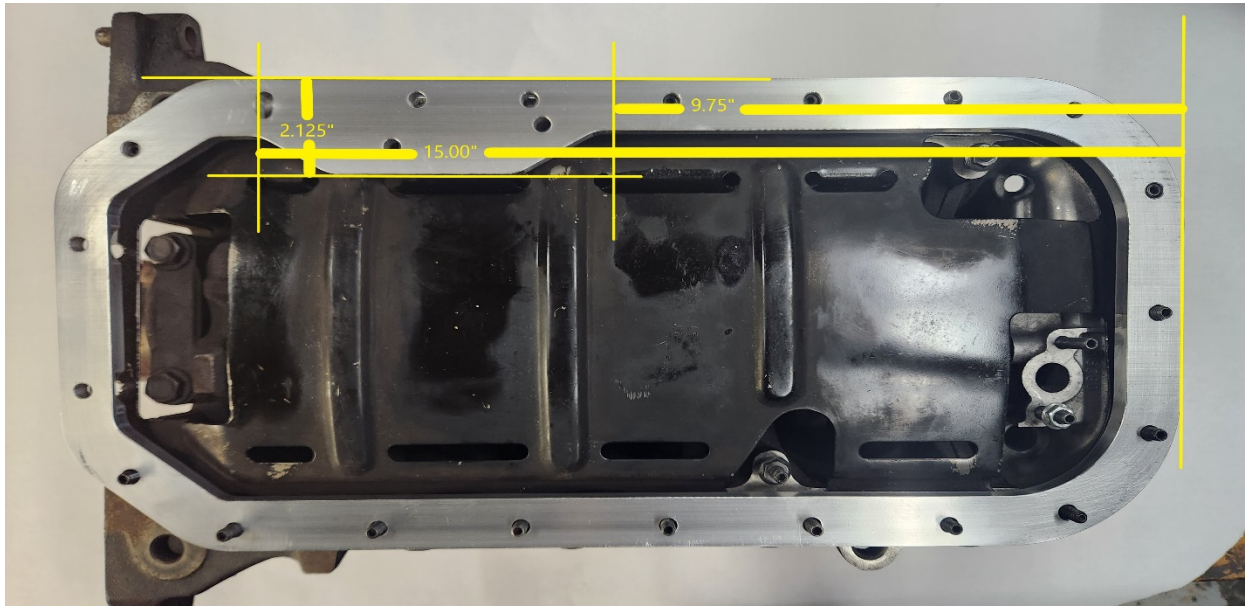
20934 Oil Pan – 16V Windage Tray Modification Instructions

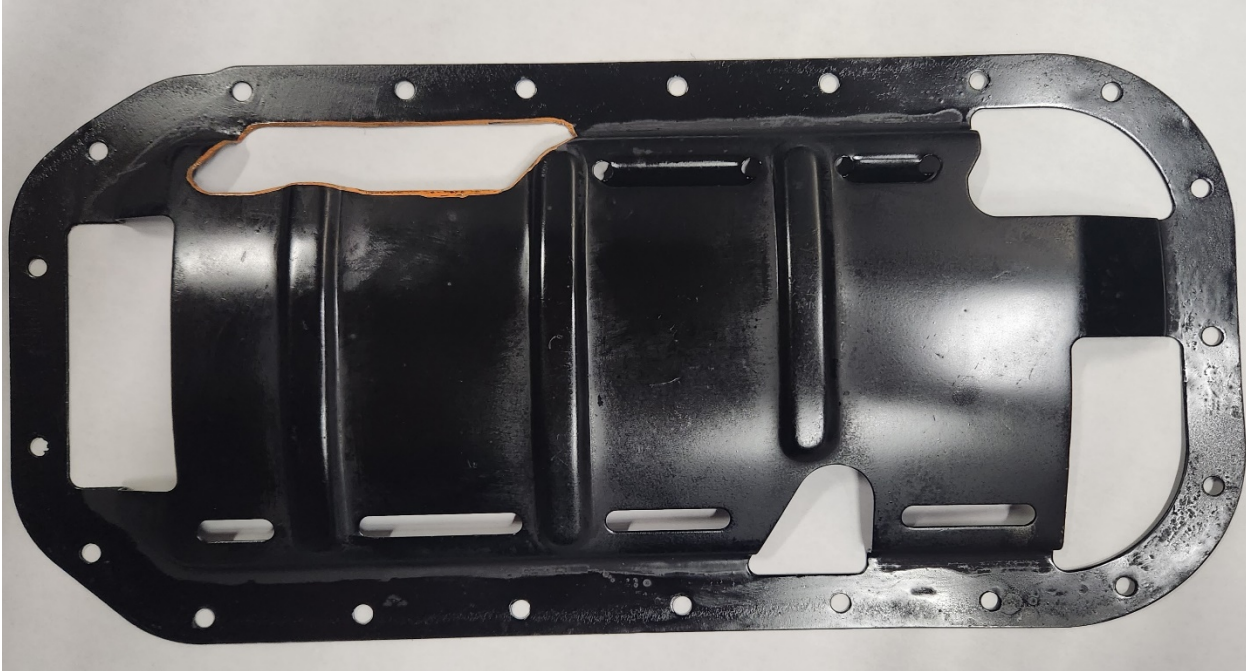
When installing a Moroso #20934 Oil Pan on a Toyota 4AGE-16V block, the stock 16V windage tray will need to be modified to allow the oil pan to fit. **If pan is installed on a 20V block, with a 20V tray, no modifications are needed.**

The windage tray clearance must retain the rail portion of the tray for sealing, but the louvered part must be removed to allow the 20V version of the rail to not interfere.



This photo shows a rough outline of where the rail is in-bound to the 16V tray. The orange line represents the basic area that needs to be removed.





After clearancing, test fit the tray with the oil pan on the block. Proceed to deburr and clean the tray thoroughly. It is not recommended to clearance the oil pan rail as it could cause the rail to deform and no longer be flat.

**For Technical Assistance, Call Moroso's Tech Line at
(203) 458-0542, 458-0546 8:30am – 5:00pm Eastern Time**

MOROSO PERFORMANCE PRODUCTS, INC
80 CARTER DR • GUILFORD, CT 06437-2116
Phone: (203) 453-6571 • Fax: (203) 453-6906

REV.A
111423

Visit Us At www.moroso.com

20934_INST