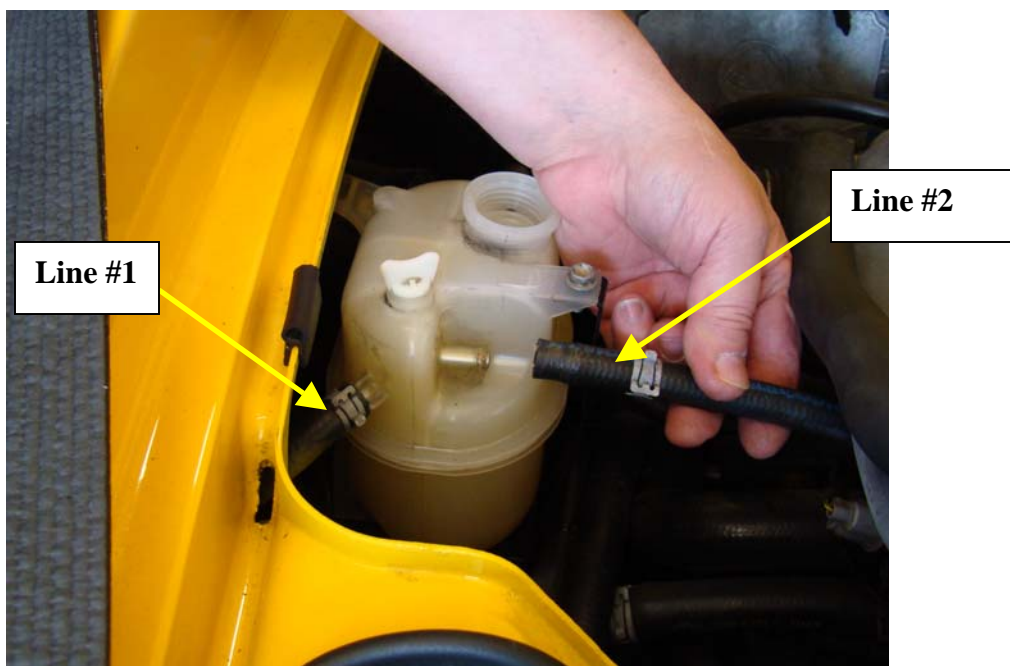




Step 1: Drain coolant tank



For Technical Assistance, call Moroso's Tech Line  
(203)-458-0542, 8:30am-5:00pm Eastern Time  
MOROSO PERFORMANCE PRODUCTS, INC.

80 CARTER DRIVE  
GUILFORD, CT 06437  
[www.moroso.com](http://www.moroso.com)



Step 2: Remove all lines from coolant tank

For Technical Assistance, call Moroso's Tech Line  
(203)-458-0542, 8:30am-5:00pm Eastern Time  
MOROSO PERFORMANCE PRODUCTS, INC.  
80 CARTER DRIVE  
GUILFORD, CT 06437  
[www.moroso.com](http://www.moroso.com)



Step 3: Remove all mounting hardware

For Technical Assistance, call Moroso's Tech Line  
(203)-458-0542, 8:30am-5:00pm Eastern Time  
MOROSO PERFORMANCE PRODUCTS, INC.  
80 CARTER DRIVE  
GUILFORD, CT 06437  
[www.moroso.com](http://www.moroso.com)



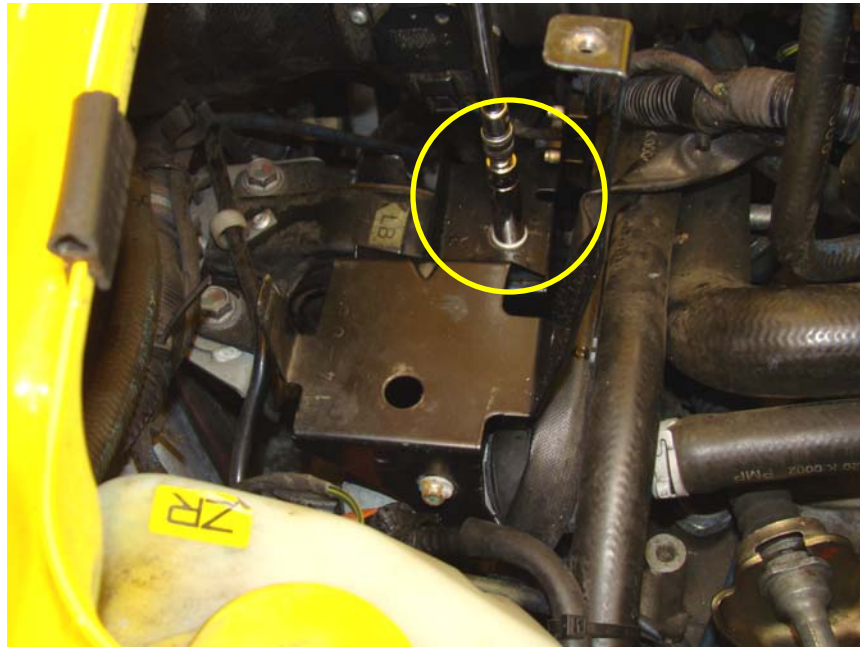


Step 4: Remove coolant tank from vehicle



Step 5: Loosen pump / bracket clamp bolt

For Technical Assistance, call Moroso's Tech Line  
(203)-458-0542, 8:30am-5:00pm Eastern Time  
MOROSO PERFORMANCE PRODUCTS, INC.  
80 CARTER DRIVE  
GUILFORD, CT 06437  
[www.moroso.com](http://www.moroso.com)



Step 6: Remove bracket mounting bolt



Step 7: Remove connector from pump

For Technical Assistance, call Moroso's Tech Line  
(203)-458-0542, 8:30am-5:00pm Eastern Time  
MOROSO PERFORMANCE PRODUCTS, INC.  
80 CARTER DRIVE  
GUILFORD, CT 06437  
[www.moroso.com](http://www.moroso.com)

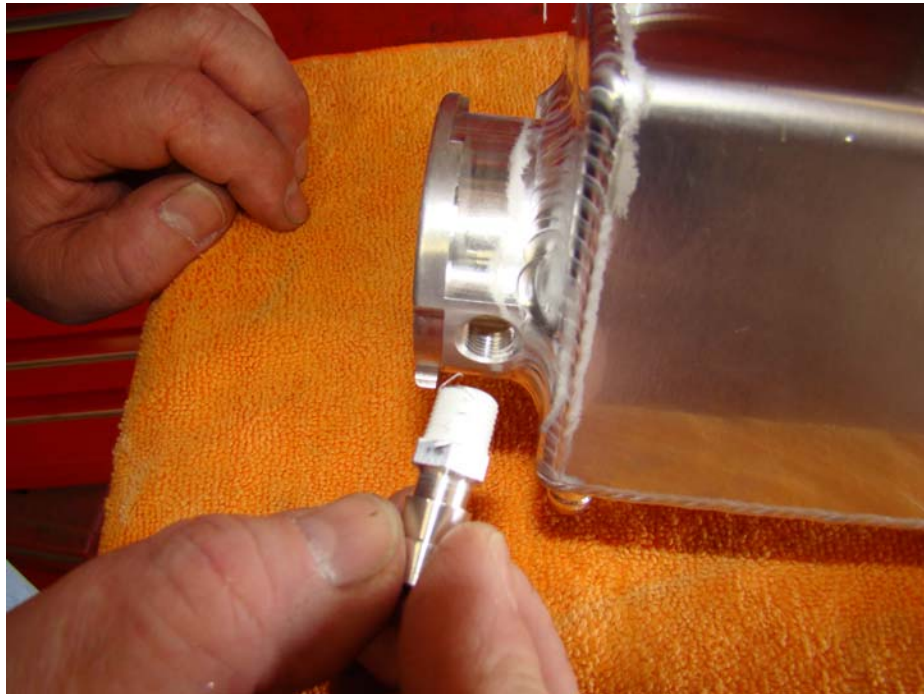


Step 8: Slide bracket over pump and remove from vehicle

For Technical Assistance, call Moroso's Tech Line  
(203)-458-0542, 8:30am-5:00pm Eastern Time  
MOROSO PERFORMANCE PRODUCTS, INC.

80 CARTER DRIVE  
GUILFORD, CT 06437  
[www.moroso.com](http://www.moroso.com)

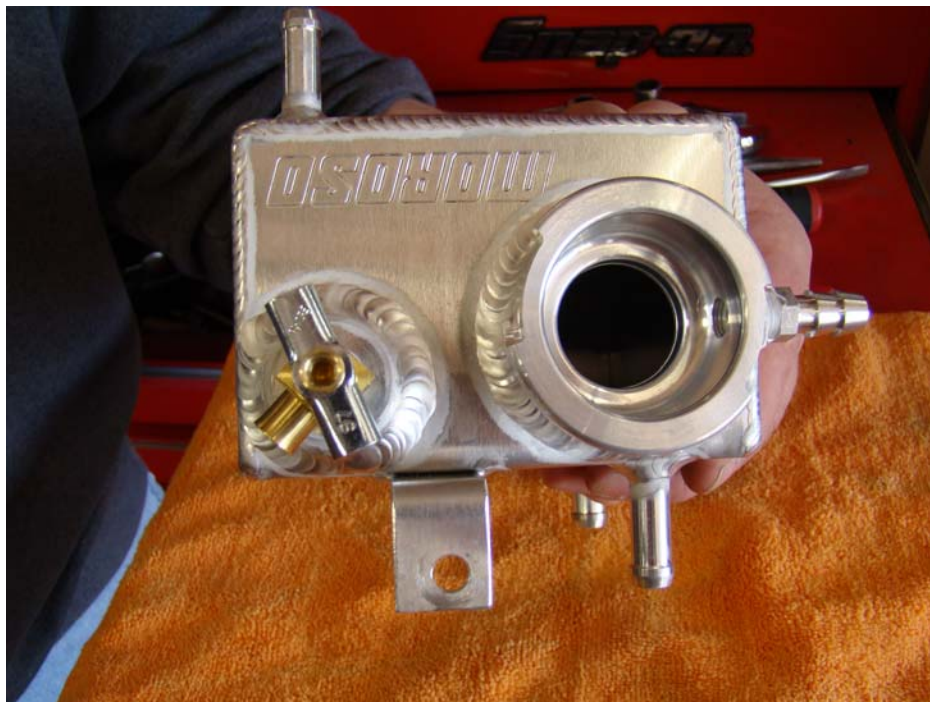
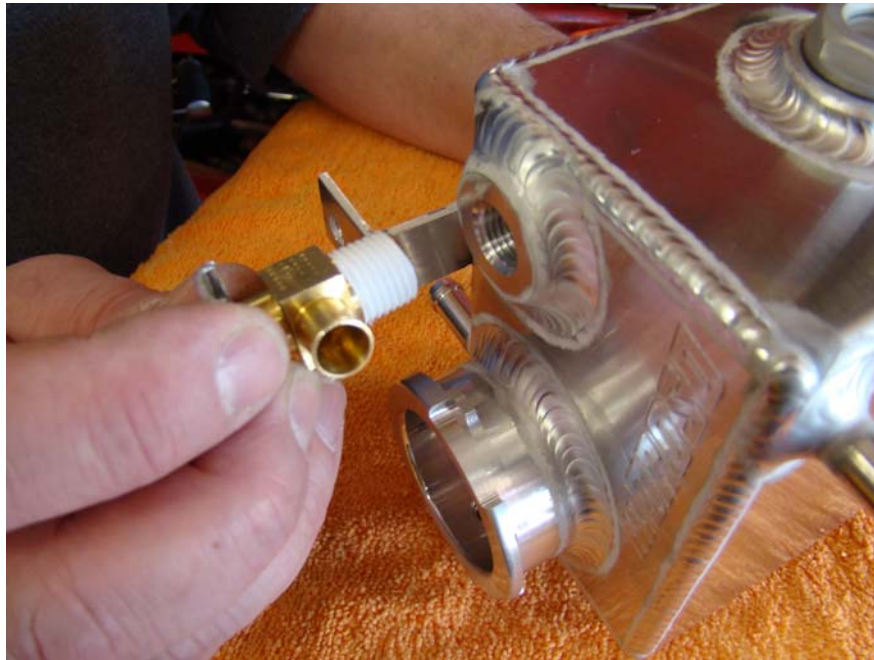




Step 9: Install and tighten overflow nipple using Teflon tape

For Technical Assistance, call Moroso's Tech Line  
(203)-458-0542, 8:30am-5:00pm Eastern Time  
MOROSO PERFORMANCE PRODUCTS, INC.

80 CARTER DRIVE  
GUILFORD, CT 06437  
[www.moroso.com](http://www.moroso.com)



Step 10: Install and tighten bleeder valve using Teflon tape  
For Technical Assistance, call Moroso's Tech Line  
(203)-458-0542, 8:30am-5:00pm Eastern Time  
MOROSO PERFORMANCE PRODUCTS, INC.

80 CARTER DRIVE  
GUILFORD, CT 06437  
[www.moroso.com](http://www.moroso.com)





Step 11: Install and tighten sight glass



Step 12: Place coolant tank into stock bracket as shown

For Technical Assistance, call Moroso's Tech Line  
(203)-458-0542, 8:30am-5:00pm Eastern Time  
MOROSO PERFORMANCE PRODUCTS, INC.  
80 CARTER DRIVE  
GUILFORD, CT 06437  
[www.moroso.com](http://www.moroso.com)



Step 13: Install 1/4-20 SHCS and fender washer on bottom of tank, do not tighten

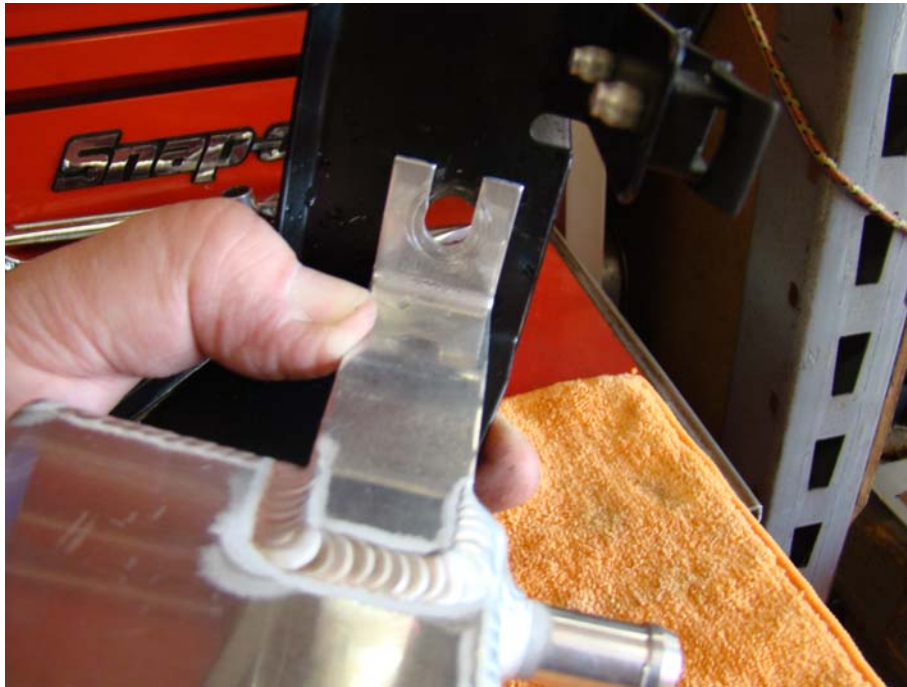


Step 14: Install stock mounting bolt in upper bracket, don not tighten

For Technical Assistance, call Moroso's Tech Line  
(203)-458-0542, 8:30am-5:00pm Eastern Time  
MOROSO PERFORMANCE PRODUCTS, INC.

80 CARTER DRIVE  
GUILFORD, CT 06437  
[www.moroso.com](http://www.moroso.com)



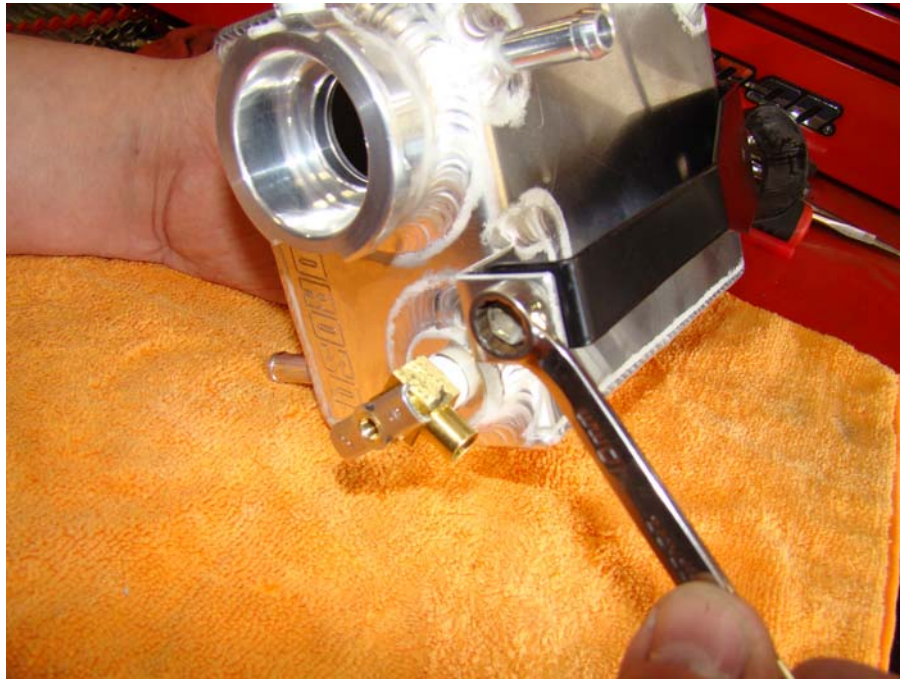


Step 15: Line up lower mount with stock mounting bracket hole

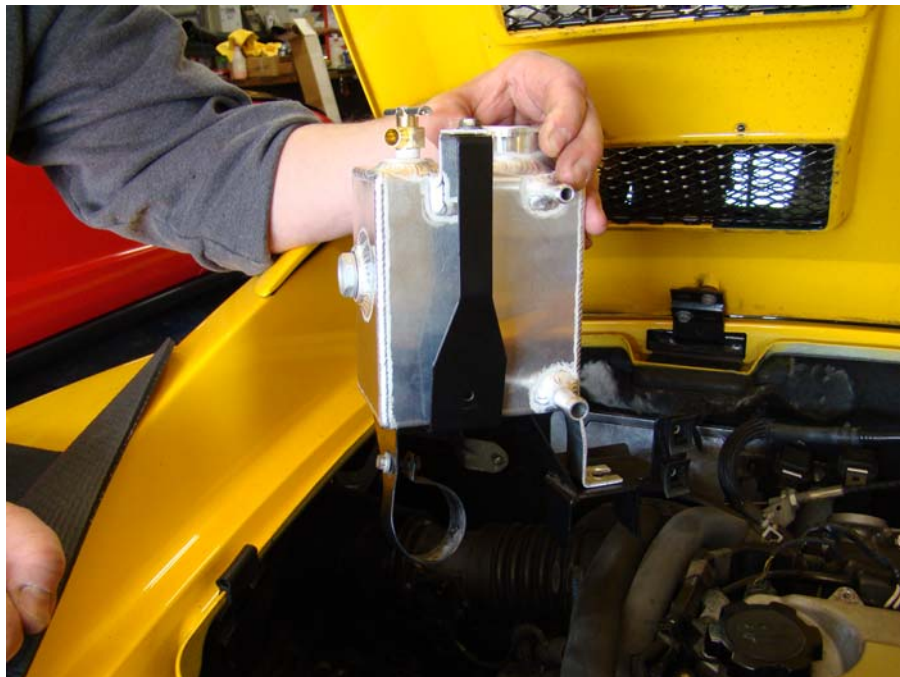


For Technical Assistance, call Moroso's Tech Line  
(203)-458-0542, 8:30am-5:00pm Eastern Time  
MOROSO PERFORMANCE PRODUCTS, INC.  
80 CARTER DRIVE  
GUILFORD, CT 06437  
[www.moroso.com](http://www.moroso.com)





Step 16: Tighten all hardware, keeping tank “square and aligned”



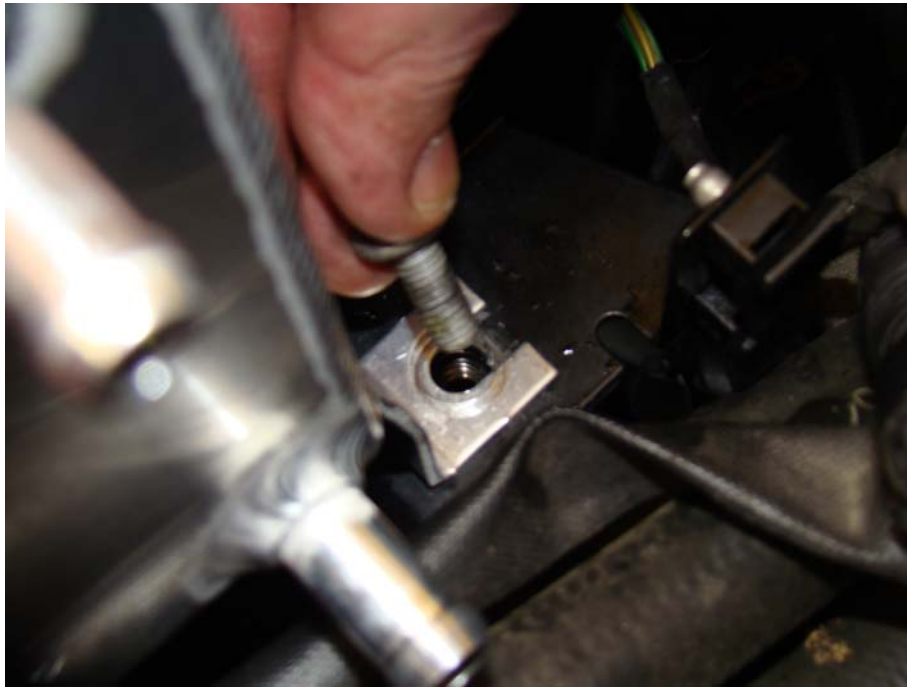
For Technical Assistance, call Moroso's Tech Line  
(203)-458-0542, 8:30am-5:00pm Eastern Time  
MOROSO PERFORMANCE PRODUCTS, INC.  
80 CARTER DRIVE  
GUILFORD, CT 06437  
[www.moroso.com](http://www.moroso.com)



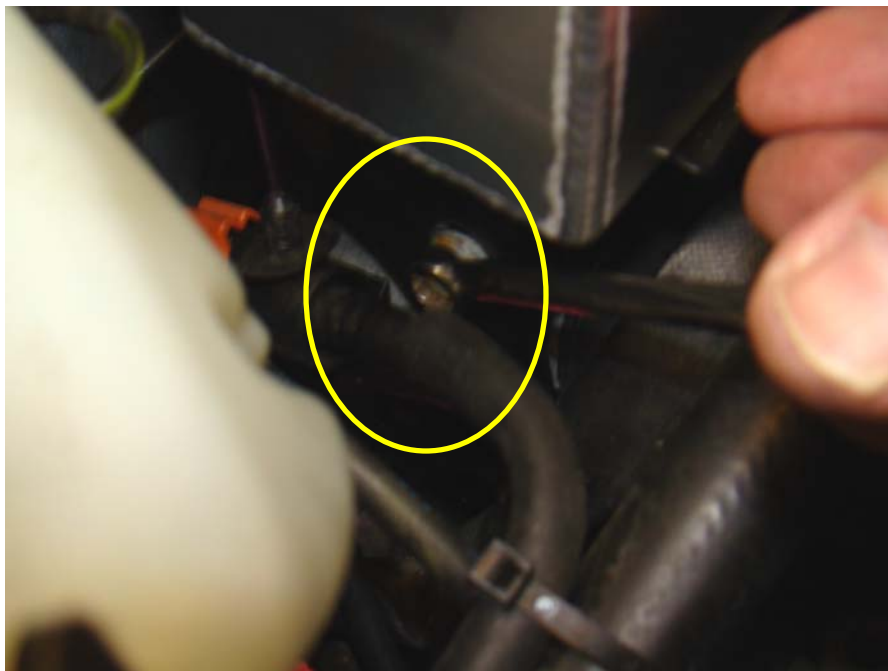
Step 17: Re-install tank and bracket assembly

For Technical Assistance, call Moroso's Tech Line  
(203)-458-0542, 8:30am-5:00pm Eastern Time  
MOROSO PERFORMANCE PRODUCTS, INC.

80 CARTER DRIVE  
GUILFORD, CT 06437  
[www.moroso.com](http://www.moroso.com)



Step 18: Install and tighten stock lower mounting bolt



Step 19: Tighten pump clamp

For Technical Assistance, call Moroso's Tech Line  
(203)-458-0542, 8:30am-5:00pm Eastern Time  
MOROSO PERFORMANCE PRODUCTS, INC.

80 CARTER DRIVE  
GUILFORD, CT 06437  
[www.moroso.com](http://www.moroso.com)





Step 20: Insert line #1 over nipple as shown and install clamp



Step 21: Place line #3 next to tank as shown, mark desired length

For Technical Assistance, call Moroso's Tech Line  
(203)-458-0542, 8:30am-5:00pm Eastern Time  
MOROSO PERFORMANCE PRODUCTS, INC.

80 CARTER DRIVE  
GUILFORD, CT 06437  
[www.moroso.com](http://www.moroso.com)



Step 22: Cut line #3 where previously marked



Step 23: Insert line #3 over nipple as shown and install clamp

For Technical Assistance, call Moroso's Tech Line  
(203)-458-0542, 8:30am-5:00pm Eastern Time  
MOROSO PERFORMANCE PRODUCTS, INC.

80 CARTER DRIVE  
GUILFORD, CT 06437  
[www.moroso.com](http://www.moroso.com)



Step 24: Place line #2 next to tank as shown, mark desired length



Step 25: Cut line #2 where previously marked

For Technical Assistance, call Moroso's Tech Line  
(203)-458-0542, 8:30am-5:00pm Eastern Time  
MOROSO PERFORMANCE PRODUCTS, INC.  
80 CARTER DRIVE  
GUILFORD, CT 06437  
[www.moroso.com](http://www.moroso.com)





Step 26: Insert line #2 over nipple as shown and install clamp



Step 27: Remove overflow tube from stock tank

For Technical Assistance, call Moroso's Tech Line  
(203)-458-0542, 8:30am-5:00pm Eastern Time  
MOROSO PERFORMANCE PRODUCTS, INC.

80 CARTER DRIVE  
GUILFORD, CT 06437  
[www.moroso.com](http://www.moroso.com)



Step 28: Install overflow tube on overflow nipple



Step 29: Fill and bleed coolant system following manufactures procedure

For Technical Assistance, call Moroso's Tech Line  
(203)-458-0542, 8:30am-5:00pm Eastern Time  
MOROSO PERFORMANCE PRODUCTS, INC.

80 CARTER DRIVE  
GUILFORD, CT 06437  
[www.moroso.com](http://www.moroso.com)



**Installation Complete**

For Technical Assistance, call Moroso's Tech Line  
(203)-458-0542, 8:30am-5:00pm Eastern Time  
MOROSO PERFORMANCE PRODUCTS, INC.  
80 CARTER DRIVE  
GUILFORD, CT 06437  
[www.moroso.com](http://www.moroso.com)