



INSTALLATION INSTRUCTIONS AND VIDEO

**Universal Wire Sets & Coil Wire for Moroso Ignition Wire Series
Mag Tune/Ultra/Ultra 40/Blue Max**

[Terminating Wire Video](#)

Note: to ensure your engine's proper firing order, we recommend you replace only one wire at a time.

Ignition Wire Striping & Preparation

Step 1: Measure the required wire length for each cylinder and select the shortest wire that will reach comfortably. Cut the wire to the proper length using a side cutter or razor blade (Photo 1). If possible, leave a small amount of extra length to account for wire stripping and terminal installation—which can slightly shorten the wire—as well as distributor clocking, if applicable.

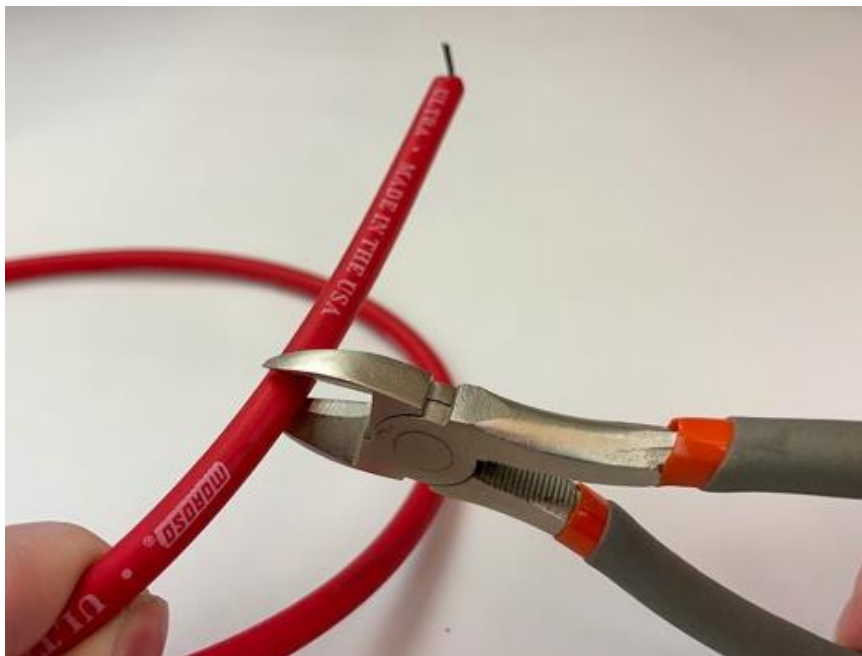


PHOTO 1

**For Technical Assistance, call Moroso's Tech Line
(203)-458-0542, 8:30am-5:00pm Eastern Time
MOROSO PERFORMANCE PRODUCTS, INC.**

**80 CARTER DRIVE
GUILFORD, CT 06437
www.moroso.com**

REV A.
122225

UNI_WIRE_INST



Step 2 is for For non-HEI distributor boots/terminals only

Step 2: Lubricate the end of the wire with a silicone spray lubricant or dielectric grease. Slide the boot over the end of the wire, then pull it up the wire at least 3½ in. to allow clearance for the stripping tool (Photo 2).



PHOTO 2

Step 3: Using a wire stripping tool, carefully strip the insulation from the conductor (Photo 3). Take care not to nick or cut the conductor. If a wire stripping tool is not supplied, use Moroso P/N 62270 or 62272 (Photo 4).

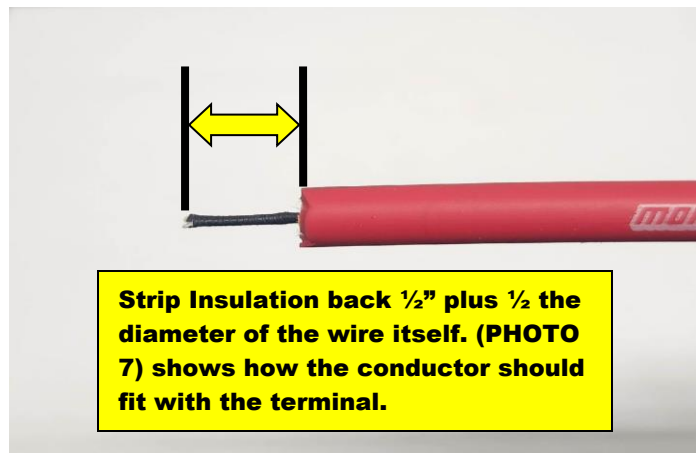


PHOTO 3

**For Technical Assistance, call Moroso's Tech Line
(203)-458-0542, 8:30am-5:00pm Eastern Time
MOROSO PERFORMANCE PRODUCTS, INC.**

**80 CARTER DRIVE
GUILFORD, CT 06437
www.moroso.com**

REV A.
122225

UNI_WIRE_INST

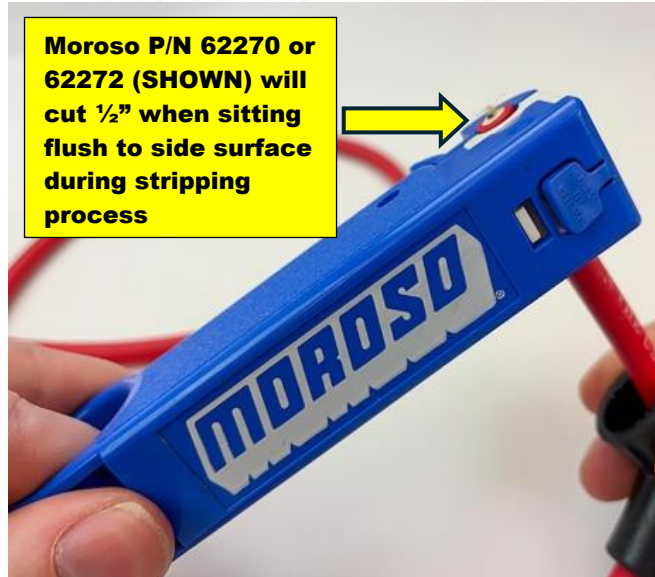


PHOTO 4

Step 4: Remove the cut insulation using a wire-stripping tool (Photo 5). Trim any loose strands from the exposed conductor; side cutters work best for this.



PHOTO 5

**For Technical Assistance, call Moroso's Tech Line
(203)-458-0542, 8:30am-5:00pm Eastern Time
MOROSO PERFORMANCE PRODUCTS, INC.**

**80 CARTER DRIVE
GUILFORD, CT 06437
www.moroso.com**

REV A.
122225

UNI_WIRE_INST



NOTE: Proper care must be taken when stripping and installing terminals to ensure the conductor's integrity and continuity are maintained. If the conductor is damaged, broken, or cut, the engine may misfire due to internal arcing—which can also cause radio interference—or arcing directly to ground.

Ignition Wire Terminal Installation

Step 5: Fold the conductor back over the insulation (Photo 6).



PHOTO 6

**For Technical Assistance, call Moroso's Tech Line
(203)-458-0542, 8:30am-5:00pm Eastern Time
MOROSO PERFORMANCE PRODUCTS, INC.**

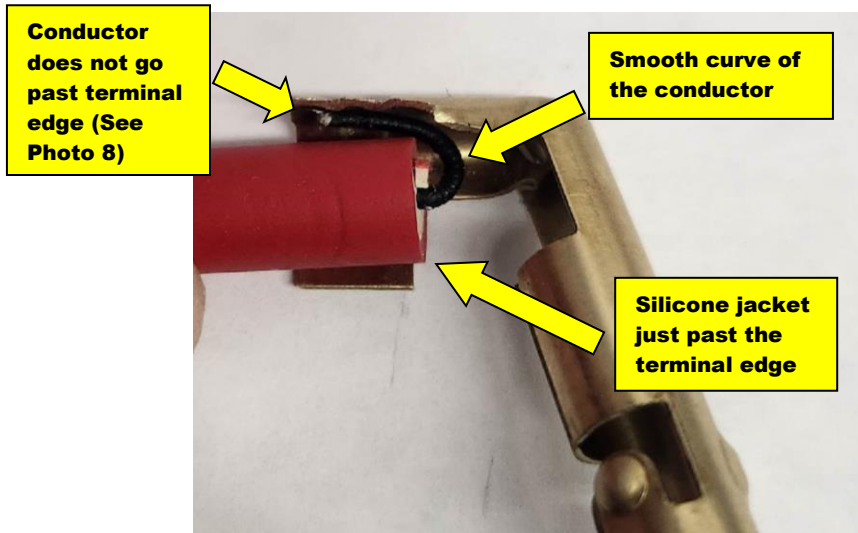
**80 CARTER DRIVE
GUILFORD, CT 06437
www.moroso.com**

REV A.
122225

UNI_WIRE_INST



Step 6: A cutaway view shows how the conductor sits against the terminal, positioned 180° opposite the terminal opening (Photo 7). A non-binding fold of the conductor and sufficient contact with the terminal ensure proper assembly and long-term reliability.



**For Technical Assistance, call Moroso's Tech Line
(203)-458-0542, 8:30am-5:00pm Eastern Time
MOROSO PERFORMANCE PRODUCTS, INC.**

**80 CARTER DRIVE
GUILFORD, CT 06437
www.moroso.com**

REV A.
122225

UNI_WIRE_INST



Step 7: Pre-crimp the terminal onto the wire by lightly squeezing the terminal edges (Photo 9). This holds the terminal in place and establishes the conductor's position before the final crimp.



PHOTO 9

Step 8: Crimp terminal to the wire using Moroso Crimp Tool P/N 62268 (Photo 10).

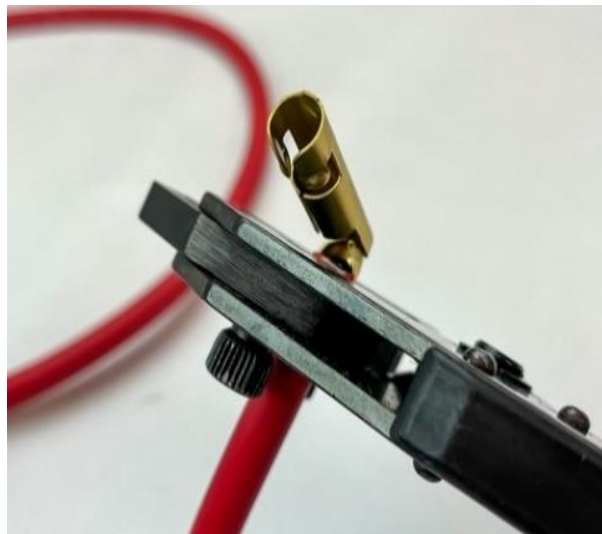


PHOTO 10

**For Technical Assistance, call Moroso's Tech Line
(203)-458-0542, 8:30am-5:00pm Eastern Time
MOROSO PERFORMANCE PRODUCTS, INC.**

**80 CARTER DRIVE
GUILFORD, CT 06437
www.moroso.com**

REV A.
122225

UNI_WIRE_INST



Step 9: Confirm the quality of your terminal crimp by verifying the following points in (Photo 11).

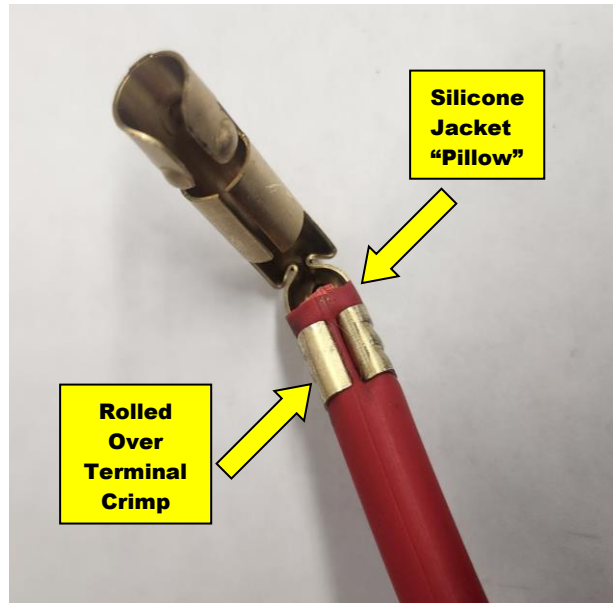


PHOTO 11

Ignition Wire Silicone Boot Installation

When installing the silicone boots, use a silicone spray lubricant or dielectric grease for best results and during normal maintenance when servicing the wire set.

For **HEI wire sets and spark plug ends**, lubricate the end of the wire and terminal, then push the terminal into the boot.

For **non-HEI distributor ends**, lubricate the end of the wire and terminal, then pull the boot over the terminal. Refer to **Step 2** for the pre-terminated boot assembly procedure.

**For Technical Assistance, call Moroso's Tech Line
(203)-458-0542, 8:30am-5:00pm Eastern Time
MOROSO PERFORMANCE PRODUCTS, INC.**

**80 CARTER DRIVE
GUILFORD, CT 06437
www.moroso.com**

REV A.
122225

UNI_WIRE_INST



With both styles, check to make sure that the terminal is properly sealed and aligned in the boot (Photo 12).



PHOTO 12

Verifying Ignition Wire Assembly

Check the assembled wire's continuity with an OHM meter or multimeter. Moroso wires should OHM out as follows:

Ultra 40 – 40 ohms/ft
Mag Tune & Ultra – 350 ohms/ft
Blue Max – 800 ohms/ft
Blue Max Solid Core – 0 ohms/ft

**For Technical Assistance, call Moroso's Tech Line
(203)-458-0542, 8:30am-5:00pm Eastern Time
MOROSO PERFORMANCE PRODUCTS, INC.**

**80 CARTER DRIVE
GUILFORD, CT 06437
www.moroso.com**

REV A.
122225

UNI_WIRE_INST



Example: The Ultra wire shown below (Photo 13) is about 35". With the multimeter set to 1K ohms, we get a reading of 1,011 ohms. Some quick math will help us confirm if this is within spec.



PHOTO 13

$35''/12'' = 2.9 \text{ ft.}$
 $350 \text{ ohms} \times 2.9 \text{ ft} = 1020 \text{ ohms}$
This wire is in the target range

Readings that are significantly higher or lower can indicate a poorly terminated or damaged wire.

**For Technical Assistance, call Moroso's Tech Line
(203)-458-0542, 8:30am-5:00pm Eastern Time
MOROSO PERFORMANCE PRODUCTS, INC.**

**80 CARTER DRIVE
GUILFORD, CT 06437
www.moroso.com**

REV A.
122225

UNI_WIRE_INST



Bendable Boot/Terminal Instructions

Moroso offers a bendable straight boot that allows minor angle adjustment to improve clearance around headers and other components near the spark plug. The terminal is designed to bend after it is installed on the spark plug. The boot must be properly clocked to ensure the terminal can bend as intended during adjustment. Failure to do so may result in damage to both the terminal and the spark plug.

Step 1: To properly adjust the boot angle, first determine the direction you want the boot to move relative to the spark plug

Step 2: Locate the spark plug end of the boot and visually locate the terminal seam. Mark the out side of the boot so the bending action goes in the direction of the terminal seam. (Photo 14).

**For Technical Assistance, call Moroso's Tech Line
(203)-458-0542, 8:30am-5:00pm Eastern Time
MOROSO PERFORMANCE PRODUCTS, INC.**

**80 CARTER DRIVE
GUILFORD, CT 06437
www.moroso.com**

REV A.
122225

UNI_WIRE_INST



**Bending direction of boot must line up with
terminal seam**

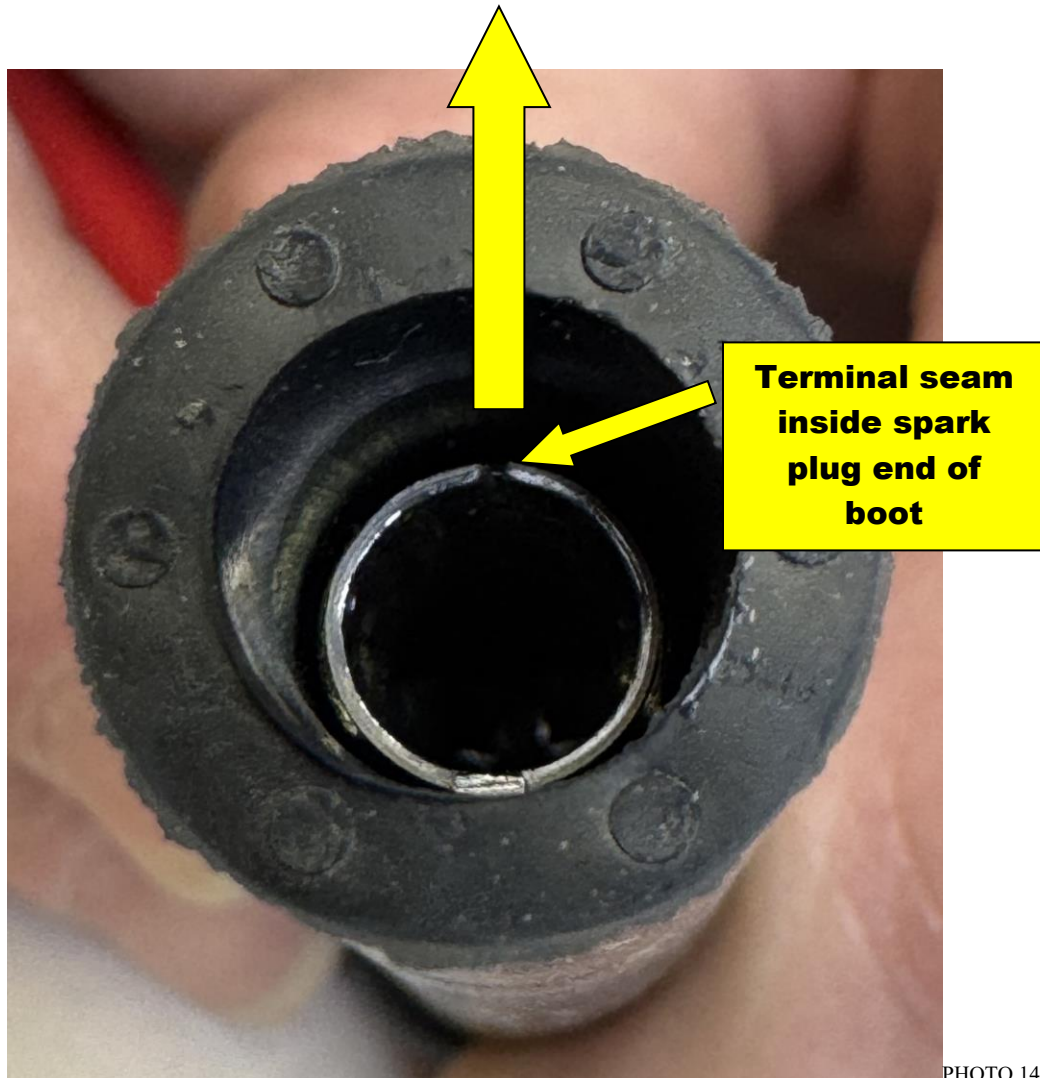


PHOTO 14

**For Technical Assistance, call Moroso's Tech Line
(203)-458-0542, 8:30am-5:00pm Eastern Time
MOROSO PERFORMANCE PRODUCTS, INC.**

**80 CARTER DRIVE
GUILFORD, CT 06437
www.moroso.com**

REV A.
122225

UNI_WIRE_INST



Example of boot bent at 135°



**For Technical Assistance, call Moroso's Tech Line
(203)-458-0542, 8:30am-5:00pm Eastern Time
MOROSO PERFORMANCE PRODUCTS, INC.**

**80 CARTER DRIVE
GUILFORD, CT 06437
www.moroso.com**

REV A.
122225

UNI_WIRE_INST