

## INSTALLATION INSTRUCTIONS C3111 – BOLT-IN SUBFRAME CONNECTORS

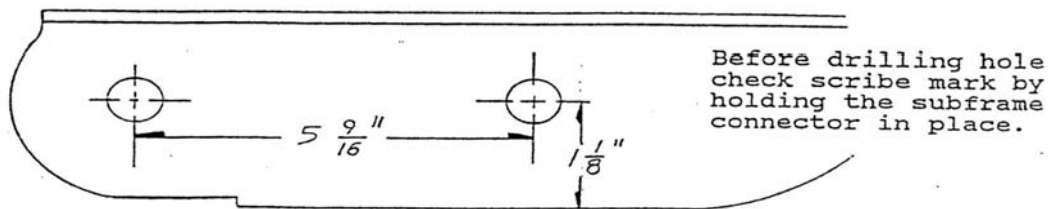
\*\*\*THIS PRODUCT REQUIRES THE REROUTING OF FACTORY EXHAUST\*\*\*

\*\*\*READ INSTRUCTIONS THROUGH BEFORE BEGINNING THIS PROJECT\*\*\*

### C3111 – 1982 & UP CAMARO BOLT-IN SUBFRAME CONNECTORS

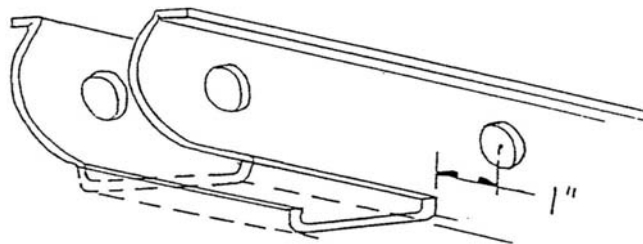
\*\*\*The use of locking thread sealant is recommended\*\*\*

1. Disconnect front mount of rear control arm, on rear subframe scribe a center mark at this location to be drilled.



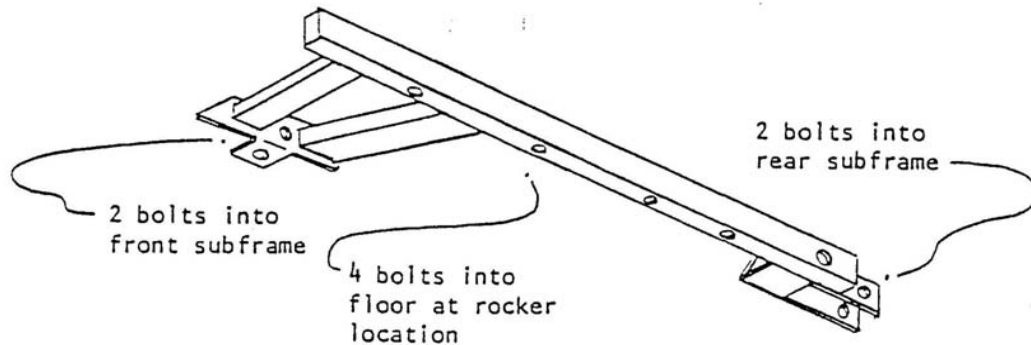
2. An extra long 12mm or 31/64 (.484") drill bit is required to drill through both sides of your subframe. (At least 10" length)
3. If using a ladder bar and more clearance is required, cut subframe back no closer than 1" from centerline of hole.
  - 3a. Put ladder bar in place.

NOTE:  
Cut back  
no further  
than 1" from  
the center line  
of the new hole.



4. Hold subframe connector in place and scribe and drill all other holes.

5. Bolt in place. Do not completely tighten.



6. IF USING LADDER BARS:

First disconnect the stock torque arm from the front of the rear end housing and transmission. Then disconnect control arm from rear and lower shock mount. With S/F connector in place attach the rear ladder bar bushing. Swing ladder bar into position and bolt shock back in place and install bushing bolt. When installing right rear ladder bar, disconnect the emergency brake cable from the brake drum and reroute through the mid section of ladder bar.

7. Mount control arm into original location if not using ladder bars.  
 8. Go back and tighten all bolts installed.  
 9. Cap open holes with plugs provided.

**\*\*\*THE REMOVAL OF THE FRONT SEATS AND MOVING THE CARPETING MAY BE NECESSARY FOR INSTALLING THE BOLT-IN SUBFRAME CONNECTORS\*\*\***

***For Technical Assistance, Call Competition Engineering's Tech Line at (203) 458-0542, 458-0546 8:30am – 5:00pm Eastern Time***

COMPETITION ENGINEERING  
 80 CARTER DR • GUILFORD, CT 06437  
 Phone: (203) 453-5200 • Fax: (203) 453-6906