



63784 Cap Installation Instructions



Step 1: Place cap on tank.



Step 2: Push down and turn to first stop.

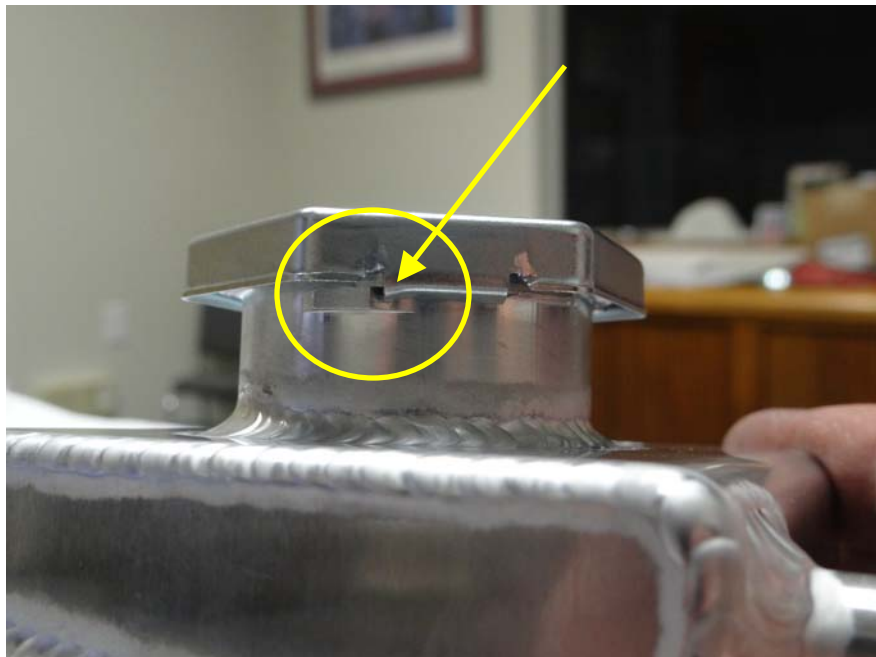
For Technical Assistance, call Moroso's Tech Line
(203)-458-0542, 8:30am-5:00pm Eastern Time
MOROSO PERFORMANCE PRODUCTS, INC.

80 CARTER DRIVE
GUILFORD, CT 06437

www.moroso.com



Step 3: Push down again and turn to second stop.



When viewing from bottom side, cap tang should be against billet stop.

For Technical Assistance, call Moroso's Tech Line
(203)-458-0542, 8:30am-5:00pm Eastern Time
MOROSO PERFORMANCE PRODUCTS, INC.

80 CARTER DRIVE
GUILFORD, CT 06437

www.moroso.com