



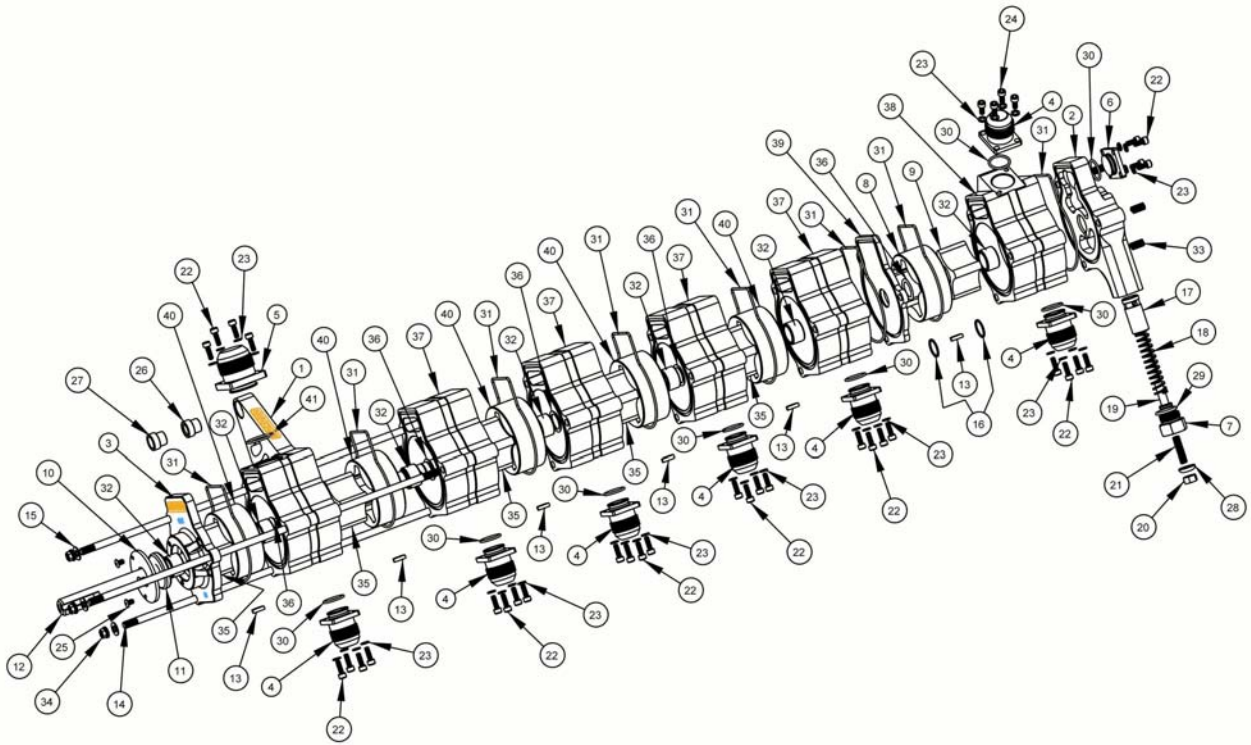
DRY SUMP OIL PUMP PART 22246
6 STAGE 1.100 PRESS.SECTION & DOOR CAR BRKT

Parts List

| P/N | DESCRIPTION | QTY |
|-------------|---|------------|
| 1 22521151 | SCAVENGE SECTION W/DOOR CAR BRACKET 1.100" | 1 |
| 2 22520120 | PRESSURE BY-PASS SECTION | 1 |
| 3 22520500 | FRONT SECTION | 1 |
| 4 22742 | -12AN MALE FITTING / OPTIONAL P/N 22741 -10AN MALE | 6 |
| 5 22743 | -16AN MALE FITTING | 1 |
| 6 22520135 | 12 PORT PLUG | 1 |
| 7 22167050 | BY-PASSPLUG FITTING | 1 |
| 8 22560146 | 1.100" SCROLL | 1 |
| 9 22520176 | 1.100" PRESSURE ROTOR | 1 |
| 10 22520395 | FRONT SEAL CAP | 1 |
| 11 22500440 | LIP SEAL | 1 |
| 12 22529160 | SHAFT | 1 |
| 13 22500340 | WOODRUFF KEY | 6 |
| 14 22529190 | 1/4-28 6 STAGE STUD | 3 |
| 15 0804019 | .26 X.5 CONICAL WASHER | 3 |
| 16 22520161 | SPIRAL RETAINING RING | 2 |
| 17 22167070 | BY-PASS VALVE | 1 |
| 18 22167035 | BY-PASS SPRING | 1 |
| 19 22167060 | BY-PASS SPRING RETAINER | 1 |
| 20 0704002 | 1/4-28 LOCK NUT | 1 |
| 21 22167039 | 1/4-28 X 1" PRESSURE ADJUSTER | 1 |
| 22 0501041 | 8-32 X .5" RETAINING SCREW | 32 |
| 23 0801002 | .181 X .303 WASHER | 36 |
| 24 0501031 | 8-32 X .375" RETAINING SCREW | 4 |
| 25 0592001 | 8-32 X .250 BUTTON HEAD RETAINING SCREW | 3 |
| 26 22500320 | .375 I.D. MOUNTING BUSHING | 1 |
| 27 22500330 | .437 I.D. MOUNTING BUSHING | 1 |
| 28 63493004 | SEALING WASHER | 1 |
| 29 22167016 | .644 I.D. X .080 THK. O-RING | 1 |
| 30 22520050 | .676 I.D. X .070 THK. O-RING | 8 |
| 31 22520060 | 3.489 I.D. X .070 THK. O-RING | 8 |
| 32 22500240 | BEARING | 6 |
| 33 22500370 | 1/4-28 X .500" HELI-COIL | 3 |
| 34 38350130 | 1/4-28 WASHER FACE LOCK NUT | 3 |
| 35 22520171 | 1.100" ROTOR | 5 |
| 36 22500501 | SEAL | 5 |
| 37 22521110 | 1.100" SCAVENGE SECTION | 4 |
| 38 22521120 | 1.100" PRESSURE SECTION | 1 |
| 39 22521140 | BULK HEAD | 1 |
| 40 22560146 | 1.100" SCROLL | 5 |
| 41 22520055 | .926 I.D. X .070 THK. O-RING | 1 |

**For Technical Assistance, Call Moroso's Tech Line at
(203) 458-0542, 458-0546 8:30am – 5:00pm Eastern Time**

MOROSO PERFORMANCE PRODUCTS, INC
80 CARTER DR • GUILFORD, CT 06437-2116
Phone: (203) 453-6571 • Fax: (203) 453-6906

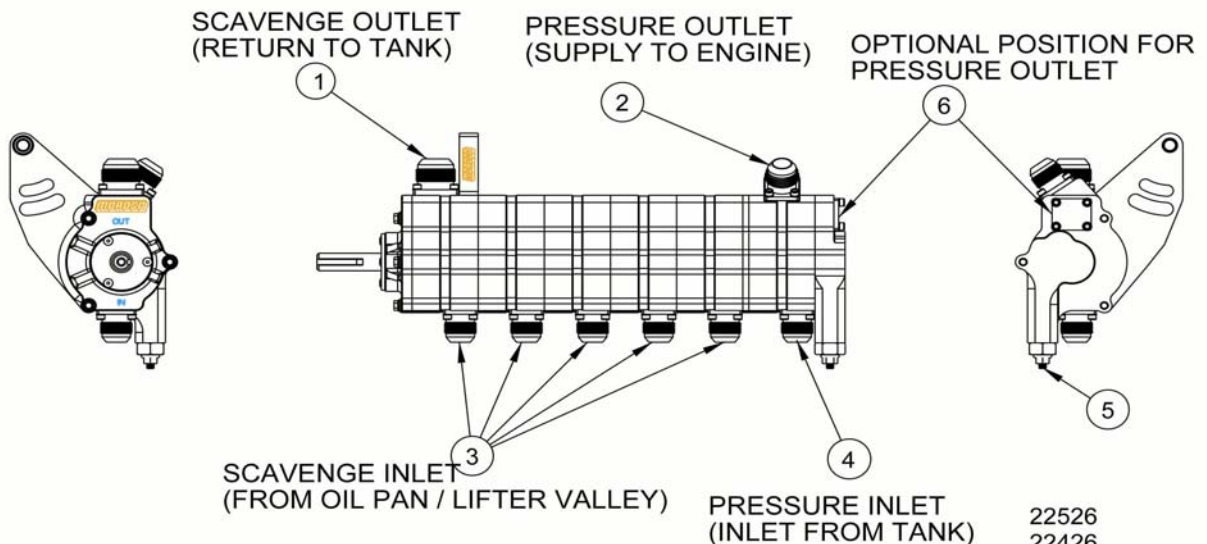


PART NUMBER / DESCRIPTION

22526 .875" PRESSURE SECTION W/Dragster Bracket
 22426 1.100" PRESSURE SECTION W/Dragster Bracket
 22256 .875" PRESSURE SECTION W/Door Car Bracket
 22246 1.100" PRESSURE SECTION W/Door Car Bracket
 REV. A

22526
 22426
 22256
 22246 INST.
 SHEET 2 OF 3

- 1) #16 AN SCVENGE OUTLET / REPLACEMENT PART # 22743
- 2) #12 AN PRESSURE OUTLET / REPLACE MENT PRT# 22742
 OPTIONAL #10 AN PRT # 22741
- 3) #12 AN SCVENGE INLETS / REPLACEMENT PART # 22742
- 4) #12 AN PRESSURE INLET / REPLACEMENT PART # 22742
- 5) PRESSURE ADJUSTER
- 6) OPTIONAL POSITION FOR PRESSURE OUTLET



SCVENGE OUTLET
 (RETURN TO TANK)

PRESSURE OUTLET
 (SUPPLY TO ENGINE)

OPTIONAL POSITION FOR
 PRESSURE OUTLET

SCVENGE INLET
 (FROM OIL PAN / LIFTER VALLEY)

PRESSURE INLET
 (INLET FROM TANK)

22526
 22426
 22256
 22246 INST.
 SHEET 3 OF 3