

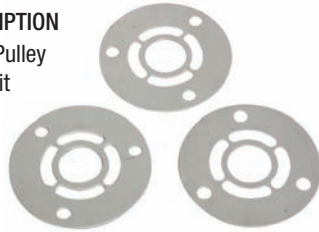


CRANK PULLEY SHIM KIT

Fits: Small and Big Block Chevrolet engines

- Includes 3 shims per pack, 1/16", 1/8" and 3/16"

PART #	DESCRIPTION
64031	Crank Pulley Shim Kit



No. 64031

UNIVERSAL WATER PUMP PULLEY SHIM KIT

Fits: All GM and Ford water pumps with either a 3/4" or 5/8" shaft

- Kit provides proper drive belt alignment with water pump
- Shims are installed between the water pump pulley and drive flange
- Kit contains two 1/16" spacers and one 1/8" spacer

PART #	DESCRIPTION
64035	Universal Aluminum Water Pump Pulley Shim Kit



No. 64035

OEM CRANKSHAFT PULLEY REINFORCEMENT PLATE

Fits: Chevrolet V8 and 90° V6 with OEM crank pulley (GM #3858533), also fits some inline Chevy 6's.

- Strengthens stock GM crank pulleys
- Precision stamped from 6061-T6 aluminum and black anodized

PART #	DESCRIPTION
64030	Crankshaft Pulley Reinforcement Plate



No. 64030

BILLET ALUMINUM CRANKSHAFT PULLEYS

V-Belt Design

- Machined from the highest grade aircraft billet aluminum for maximum durability
- Deep precision machined grooves ensure belt retention even during extreme changes in engine RPM
- When crankshaft and water pump pulleys are used together, water pump speed is reduced by approximately 30%
- Hard-coat anodized for extended life
- Uses 36° x 17/32" wide belt

PART #	DESCRIPTION
64051	Crankshaft Pulley, Billet, single groove, 30% reduction, 5.25" O.D. Fits: SBC, 1968-earlier (with short water pump)
64061	Crankshaft Pulley, Billet, double groove, 25% reduction, 5.40" O.D. Fits: SBC, 1968-earlier (with short water pump)
64071	Crankshaft Pulley, Billet, single groove, 50% reduction, 4.00" O.D. Fits: SBC, 1968-earlier (with short water pump)
64111	Crankshaft Pulley, Billet, double groove, 50% reduction, 4.04" O.D. Fits: SBC and 90° V6 Chevys, 1969-later (with long water pump)
64201	Crankshaft Pulley, Billet, single groove, 30% reduction, 5.25" O.D. Fits: BBC, 1968-earlier (with short water pump)
64211	Crankshaft Pulley, Billet, double groove, 25% reduction, 5.40" O.D. Fits: BBC, 1968-earlier (with short water pump)
64551	Crankshaft Pulley, Billet, double groove, 4" dia. fits all 4-bolt dampeners, reduction ratio varies, 4.00" O.D. Fits: Ford 351-400 Cleveland, Boss 302
64701	Crankshaft Pulley, Billet, single groove, with standard dampener, 30% reduction, 5.00" O.D. Fits: Chrysler 340-440, pre-1972
64910	Crankshaft Pulley, Billet, double groove, 5.50" O.D. Includes spacer to align with 3/4" water pump shaft. Use with Nos. 64900 & 64901 and 36° x 1/2" wide belt. Designed by Banjo Matthews. Fits: BBC and SBC V8's and 90° V6



No. 64551



No. 64051



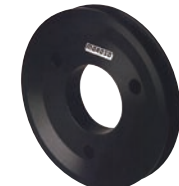
No. 64061



No. 64071



No. 64111



No. 64201



No. 64211



No. 64910



No. 64701



PULLEYS



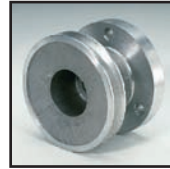
No. 64050



No. 64060



No. 64070



No. 64100



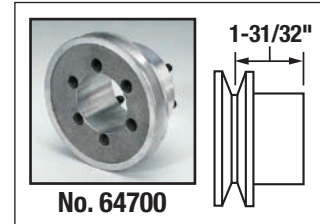
No. 64110



No. 64210

CAST ALUMINUM CRANKSHAFT PULLEYS

- Precision machined from high grade, lightweight aluminum castings
- Extra-deep belt grooves provide added belt retention during rapid changes in engine RPM
- Small pulley diameter slows fan, water pump, and alternator speed to reduce horsepower-robbing drag
- High RPM water pump operation is improved, reducing impeller speed below cavitation threshold
- Use 36° x 17/32" wide belt



PART # DESCRIPTION

- 64050** Crankshaft Pulley, single groove, 30% reduction, 5.25" O.D. **Fits:** SBC, 1968-earlier (with short water pump)
- 64060** Crankshaft Pulley, double groove, 25% reduction, 5.40" O.D. **Fits:** SBC, 1968-earlier (with short water pump)
- 64070** Crankshaft Pulley, single groove, 50% reduction, 4.00" O.D. **Fits:** SBC, 1968-earlier (with short water pump)
- 64100** Crankshaft Pulley, single groove, 50% reduction, 4.00" O.D. **Fits:** SBC, 1969-later (with long water pump)
- 64110** Crankshaft Pulley, double groove, 50% reduction, 4.04" O.D. **Fits:** SBC and 90° V6 Chevys, 1969-later (with long water pump)
- 64120** Crankshaft Pulley, single groove, 30% reduction, 4.95" O.D. **Fits:** Chevrolet 302-350, 1969 and later (with long water pump)
- 64200** Crankshaft Pulley, single groove, 30% reduction, 5.25" O.D. **Fits:** Chevrolet 396-454, pre-1969 (with short water pump)
- 64210** Crankshaft Pulley, double groove, 25% reduction, 5.40" O.D. **Fits:** Chevrolet 396-454, pre-1969 (with short water pump)
- 64550** Crankshaft Pulley, double groove, 4" dia., fits all 4 bolt dampeners, reduction ratio varies, 4.00" O.D.
Fits: Ford 351-400 Cleveland, Boss 302
- 64700** Crankshaft Pulley, single groove, with standard dampener, 30% reduction, 5.00" O.D.
Fits: Chrysler 340-440, pre-1972

WATER PUMP PULLEY

Gilmer Belt Design

Fits: Most water pumps including Chevrolet V8 & 90° V6, Buick V6, Ford and Chrysler

- Hard-coat anodized for exceptional wear characteristics
- Machined from 2024-T4 billet aluminum
- For 3/4" shafts. Includes bushing for 5/8" shafts
- 28-tooth, 3/8" pitch with slotted mounting holes



No. 64863

PART # DESCRIPTION

- 64863** Billet Aluminum Water Pump Pulley

ALTERNATOR PULLEYS

V-Belt Design

- Large diameter reduces alternator speed for high engine RPM applications
- Machined from high grade, lightweight aluminum to reduce alternator bearing loads
- Deep groove helps retain V-belt at high RPM
- Uses 36° x 17/32" V-belts



No. 64800



No. 64840

PART # DESCRIPTION

- 64800** Alternator Pulley, single groove V-belt. 5.00" O.D. **Fits:** For GM and Ford Alternators with 21/32" dia. shaft
- 64840** Alternator Pulley, single groove V-belt. 5.00" O.D. **Fits:** Chrysler to 1971



POWER STEERING PULLEYS

Fits: Late model GM pumps

- Designed for Oval Track and Road Race applications using the late model, small GM power steering pump with remote reservoir
- 6" diameter, hard-coat anodized billet aluminum
- Deep-grooved to ensure belt retention under extreme racing conditions
- Can be used as replacement pulley for Sweet-type pumps
- Use with 36° x 1/2" wide belt

PART #	DESCRIPTION
64860	Power Steering Pulley



No. 64860

BILLET ALUMINUM WATER PUMP PULLEY

V-Belt Design

Fits: Chevy V8 and Small Block Ford 90° V6 (with short water pump) with 5/8" or 3/4" dia. shaft

- Machined from the highest grade aircraft billet aluminum for maximum durability
- Deep precision machined grooves ensure belt retention even during extreme changes in RPMs
- When crankshaft and water pump pulleys are used together, water pump speed is reduced by approximately 30%
- Hard-coat anodized for extended life
- Includes bushing for 5/8" shafts

PART #	DESCRIPTION
64900	Billet Aluminum Water Pump Pulley, double groove 7.75" O.D. Use with Pulley No. 64910 and 36° x 1/2" wide belt. Designed by Banjo Matthews



No. 64900

BILLET ALUMINUM ALTERNATOR PULLEYS

V-Belt Design

- Machined from the highest grade aircraft billet aluminum for maximum durability
- Deep precision machined grooves ensure belt retention even during extreme changes in engine RPM
- When crankshaft and water pump pulleys are used together, water pump speed is reduced by approximately 30%
- Hard-coat anodized for extended life

PART #	DESCRIPTION
64870	Billet Aluminum Alternator Pulley. Single groove, 5" O.D. Use 36° x 1/2" wide belt <i>Fits: GM and Ford Alternators with 21/32" dia. shaft</i>
64875	Billet Aluminum Alternator Pulley. Single groove, 5" O.D. Use with 36° x 1/2" wide belt <i>Fits: Mitsubishi and Nippondenso Alternators with 15mm dia. shaft</i>



No. 64870



No. 64875

RADIUS TOOTH ALTERNATOR PULLEY

Moroso Radius Tooth Alternator Pulley is designed to work more efficiently and take less power to drive. Moroso Radius Tooth Alternator Pulley is made to use a .500" wide drive belt, and with a wide variety of drive pulley sizes, any drive ratio you may need is achievable. This pulley is made to accept a .590" diameter shaft alternator.

ALTERNATOR PULLEY CHART

ALT. PULLEY PART #	NO. OF TEETH	DRIVE PULLEY PART #	NO. OF TEETH	DRIVE RATIO
23556	20	23558	40	200%



No. 23556