

## TRANNY PANS

### FORD TRANSMISSION PANS

Fully Fabricated Aluminum Pans with one piece Billet Rail

**No. 42040**

*Fits:* Ford C4

**No. 42060**

*Fits:* Ford C6



## COOLING SYSTEM

### UNIVERSAL COOLANT EXPANSION TANK

**No. 63766**

Fabricated Aluminum, 1-1/4 Qt. capacity with integral mounting bracket



## IGNITION WIRE



### BLUE MAX CUSTOM FIT WIRE SET

**No. 72600**

*Fits:* 1965-66, 8 Cylinder

**No. 72605**

*Fits:* 1967-69, 8 Cylinder

### ULTRA 40 CUSTOM FIT RACE WIRE SETS

**No. 73630**

Sleeved, Ford 289-302, HEI Style Cap (8.65mm)

**No. 73631**

Sleeved, Ford 289-302, Non-HEI Style Cap (8.65mm)

**No. 73626**

Sleeved, Ford 351W, HEI Style Cap, Oval Track (8.65mm)

**No. 73628**

Sleeved, Ford 429, 460, HEI Style Cap (8.65mm)



## CHASSIS COMPONENTS



### SLIDE-A-LINK™

**No. C2094**

Patented, bolt-on traction device  
*Fits:* 1965-1973 Ford Mustang



### FRAME CONNECTORS

**No. C3140** (shown)

Bolt-on style

*Fits:* 1965-1970 Ford Mustang

**No. C3040**

Weld-in style

*Fits:* 1965-1973 Ford Mustang

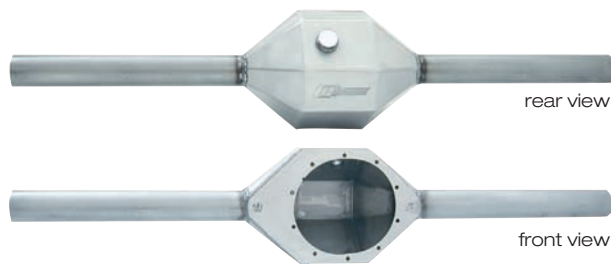
### FABRICATED REAR AXLE HOUSINGS

**No. C9100** (Chrome Moly Steel)

**No. C9200** (Mild Steel)

Cut-to-length 3" axle tubes, 60.75" overall length

*Fits:* Ford 9" Differential



rear view

front view

80 Carter Drive  
Guilford, CT 06437  
203.453.6571  
203.458.0542 tech Line  
www.moroso.com



HIGH PERFORMANCE  
**PARTS** FOR  
vintage

# MUSTANG

BY



# SPECIALLY MADE FOR VINTAGE MUSTANG & KIT CARS

## OIL PANS

### DRAG/ ROAD RACE PANS



**No. 20501**  
Steel, Kicked-out Front Sump with track proven baffling, 9 Qt. capacity, 8" Deep  
**Fits:** Ford 351



**No. 20503**  
Steel, Kicked-out Front Sump with track proven baffling, 9 Qt. capacity, 8" Deep  
**Fits:** Ford 289-302 Engines



**No. 20608**  
Steel, Kicked-out Front Sump with track proven baffling, 8 Qt. capacity, 6" Deep  
**Fits:** Ford 352-428 FE



**No. 20609**  
Steel, Deep Front Sump with track proven baffling, 7 Qt. capacity, 7.5" Deep  
**Fits:** Ford 352-428 FE

### STREET & STRIP PANS

**No. 20558**  
Steel, Wet Sump, 7 Qt. capacity, 8" Deep  
**Fits:** Ford 351C & 351M



### STREET & STRIP PANS



**No. 20502**  
Steel, Wet Sump, 7 Qt. capacity, 8" Deep  
**Fits:** Ford 289-302



**No. 20607**  
Steel, Wet Sump, 8 Qt. capacity, 6" Deep  
**Fits:** Ford 352-428 FE



**No. 20507**  
Steel, Front Sump, 7 Qt. capacity, 8" Deep  
**Fits:** Ford 351W



**No. 20510**  
Painted Steel, Front Sump, 8 Qt. capacity, 10" Deep  
**Fits:** Ford 289-302



**No. 20508**  
Painted Steel, Front Sump, 8 Qt. capacity, 10" Deep  
**Fits:** Ford 351W

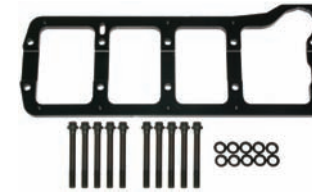


**No. 20560**  
Painted Steel, Wet Sump, 9 Qt. capacity, 10" Deep  
**Fits:** Ford 351C (incl. Boss 351)

**No. 20610**  
Painted Steel, Deep Front Sump, 9 Qt. capacity, 8-1/2" Deep  
**Fits:** Ford 352-428 FE

## OILING SYSTEM

**No. 22928**  
Main Cap Girdle, made from 1/2" steel.  
**Fits:** Ford 289-302



### LOUVERED WINDAGE TRAYS

**No. 22930**  
Louvered Windage Tray  
**Fits:** Ford 5.0L Engines used in Fox Chassis



**No. 22935**  
**Fits:** Ford 351W/SVO

**No. 22939**  
**Fits:** Ford 351C & 351M

**No. 22940**  
Louvered Windage Tray  
**Fits:** Ford 352-428 FE



## VACUUM PUMPS

### ORIGINAL DESIGN 4-VANE PUMP

**No. 22641**  
Versatile Billet Aluminum design, for wet/dry sump applications.

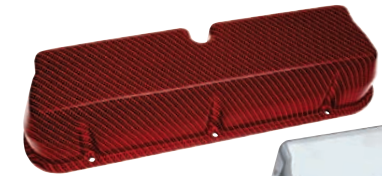


**No. 63909**  
Vacuum Pump Bracket for Big Block Ford.



**No. 63911**  
Vacuum Pump Bracket or Small Block Ford.

## VALVE COVERS



**No. 68453**  
Fiber Design Cast Aluminum in Red/Black. Also available in Grey/Black (No. 68451) and Blue/Black (No. 68452)  
**Fits:** Ford 221, 260, 289, 302 & 351W



**No. 68450**  
Tall Design, Die Cast Aluminum with polished finish.  
**Fits:** Ford 221, 260, 289, 302 & 351W



**No. 68325**  
Tall Design, Fabricated Aluminum, Billet Rail  
**Fits:** Ford 221, 260, 289, 302 & 351W



**No. 68349**  
Fabricated Aluminum, Billet Rail, 3.5" Tall  
**Fits:** Ford 429-460

## AIR CLEANER

**No. 65917**  
Fiber Design Low Profile Racing Air Cleaner in Red/Black. Also available in Grey/Black (No. 68915) and Blue/Black (No. 65916), see swatches above.

